



jean pascal levy trumet



# cubic root

Customizable modular brass and polyester storage unit

Available in brass or aluminium (polished or nickel plated), the Cubic Root skins are textured in 3 different patterns, "Flesh", "Network" or "Vein" each evoking states of matter solidification.

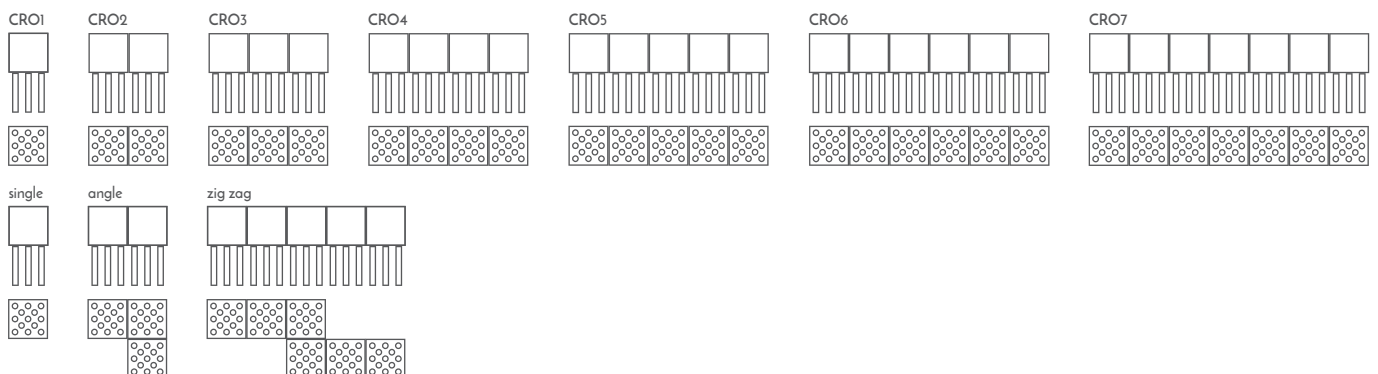
The legs are made of solid polyester and decorated with perforations that reflect a built-in, dimmable, LED light, and provide immaterial roots to the contrasting metal units.

Cubic Root units are available in 7 standard configurations, and several leg combinations are proposed for each category.

Custom buildout available for accessories and mobile shelving.

\* all creations are handmade, little differences can appear, each piece is unique.

size:



## creation date

2017 | limited edition

## materials

structure: steel

tiles: brass or aluminium

legs: polyester or stainless steel

## dimensions & weight

module: L 15,7 x W 15,7 x H 15,7 in

legs: H 15,7 in, H 23,55 in, H 31,4 in

brass tiles: 120 pounds

aluminium tiles: 80 pounds

## JPLT contact

[www.jplt.net](http://www.jplt.net)

[jplt@jplt.net](mailto:jplt@jplt.net)

## US representative

Rune, New York

625 Greenwich St., Studio

New York, NY 10014

mob +1 917 580 0249

[www.rune.nyc](http://www.rune.nyc)

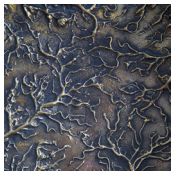
[info@rune.nyc](mailto:info@rune.nyc)



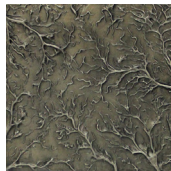
# cubic root

Customizable modular brass and polyester storage unit

texture:



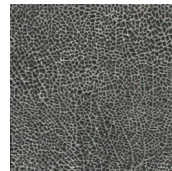
"veins" brass



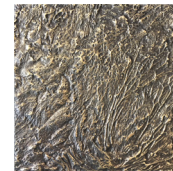
"veins" nickel



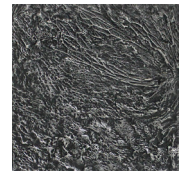
"cell" brass



"cell" alu



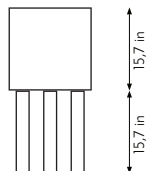
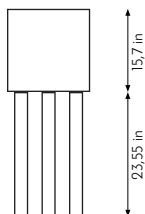
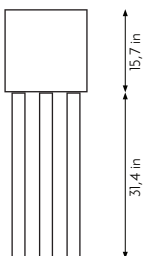
"flesh" brass



"flesh" alu

each design is available in various finishes (shine, patina).

legs height:



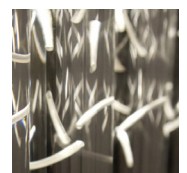
legs type:



conical



stainless steel



tubular

## creation date

2017 | limited edition

## materials

structure: steel

tiles: brass or aluminium

legs: polyester or stainless steel

## dimensions & weight

module: L 15,7 x W 15,7 x H 15,7 in

legs: H 15,7 in, H 23,55 in, H 31,4 in

brass tiles: 120 pounds

aluminium tiles: 80 pounds

## JPLT contact

[www.jplt.net](http://www.jplt.net)

[jplt@jplt.net](mailto:jplt@jplt.net)

## US representative

Rune, New York

625 Greenwich St., Studio

New York, NY 10014

mob +1 917 580 0249

[www.rune.nyc](http://www.rune.nyc) | [info@rune.nyc](mailto:info@rune.nyc)